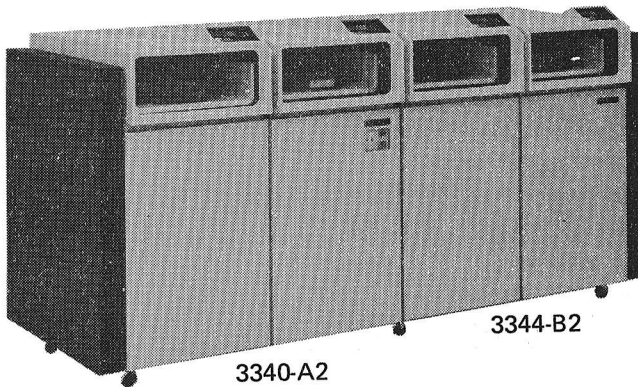
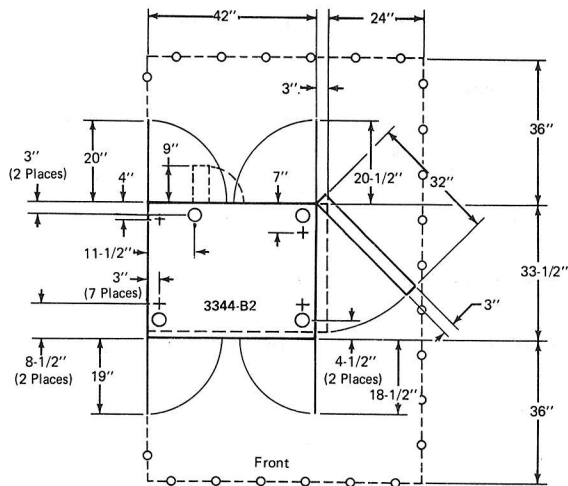


3344 DIRECT ACCESS STORAGE MODEL B2

Plan View



Specifications

Dimensions:

	Width	Depth	Height
Inches	42*	33-1/2	46-1/2
Centimeters	107*	85	118

Service Clearances:

	Front	Rear	Right	Left
Inches	36	36	0**	0
Centimeters	91	91	0**	0

Weight:

850 (390 kg)

Heat Output/hr:

5000 Btu (1300 kcal)

Airflow/min:

400 ft³ (12m³)

Power Requirements:***

kVA	1.7
Phases	3

Operating Environment:

Temperature	60° to 90° F (16° to 32° C)
Relative humidity	20% to 80%
Maximum wet bulb	78° F (26° C)

Nonoperating Environment:

Temperature	50° to 110° F (10° to 43° C)
Relative humidity	8% to 80%
Maximum wet bulb	80° F (27° C)

* The end unit dimension is 45 inches (114 cm) with a 3-inch (8-cm) cover added.

** Service clearance is 24 inches (61 cm) if this is an end unit.

*** Powered from 3340-A2.